



WATER STORY

Xiaowe Zhang

WATER STORY

Type:
Academic | UC Davis | Senior Project

Time:
2017 Spring Quarter

Location:
Vacaville Performing Arts Theatre

Professor/Teaching Assistant:
Patsy Owens; Cory Parker

Design Programs:
Photoshop, InDesign, Illustrator, Rhinoceros, AutoCAD

CONTENTS

- 01

SITE ANALYSIS

WATER STORY
- 02

CASE STUDY

WATER STORY
- 03

DESIGN INSPIRATIONS

WATER STORY
- 04

DESIGN DIAGRAM

WATER STORY
- 05

FUTURE VISIONS

WATER STORY

01

SITE ANALYSIS

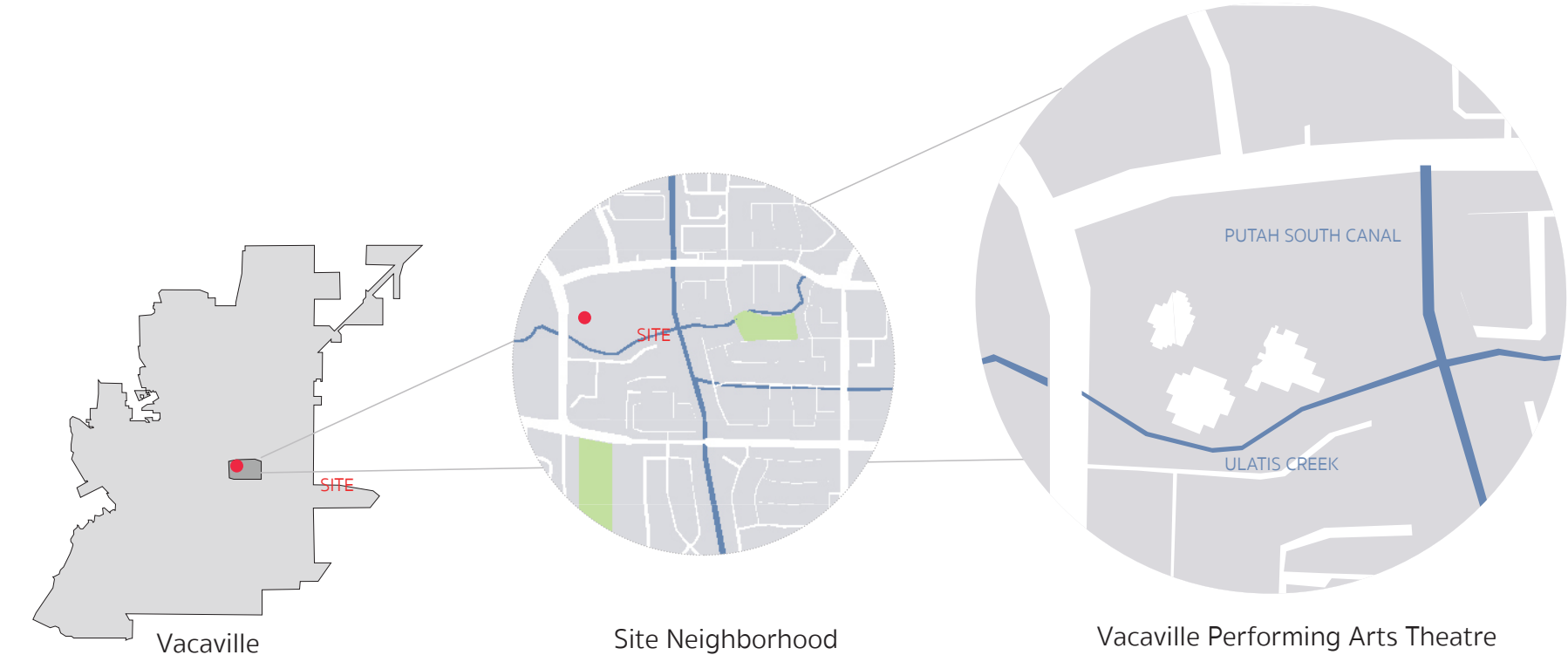
PROJECT INTRODUCTION

Recent studies have found that public art is instrumental in creating an attractive community. The Dirt's Jared Green writes "The Knight Foundation's Soul of the Community initiative surveyed some 43,000 people in 43 cities and found that "social offerings, openness and welcome-ness," and, importantly, the " 'aesthetics of a place – its art, parks, and green spaces,' ranked higher than education, safety, and the local economy as a 'driver of attachment.'" And, "in Philly: a survey of local residents found that viewing public art was the 2nd most popular activity in the city, ranking above hiking and biking." Therefore, designing a waterfront park combining public art to stimulate people's public participation becomes the impetus for my senior project. I want to design a waterfront park that is an open gallery for art pieces and surrounding landscapes.

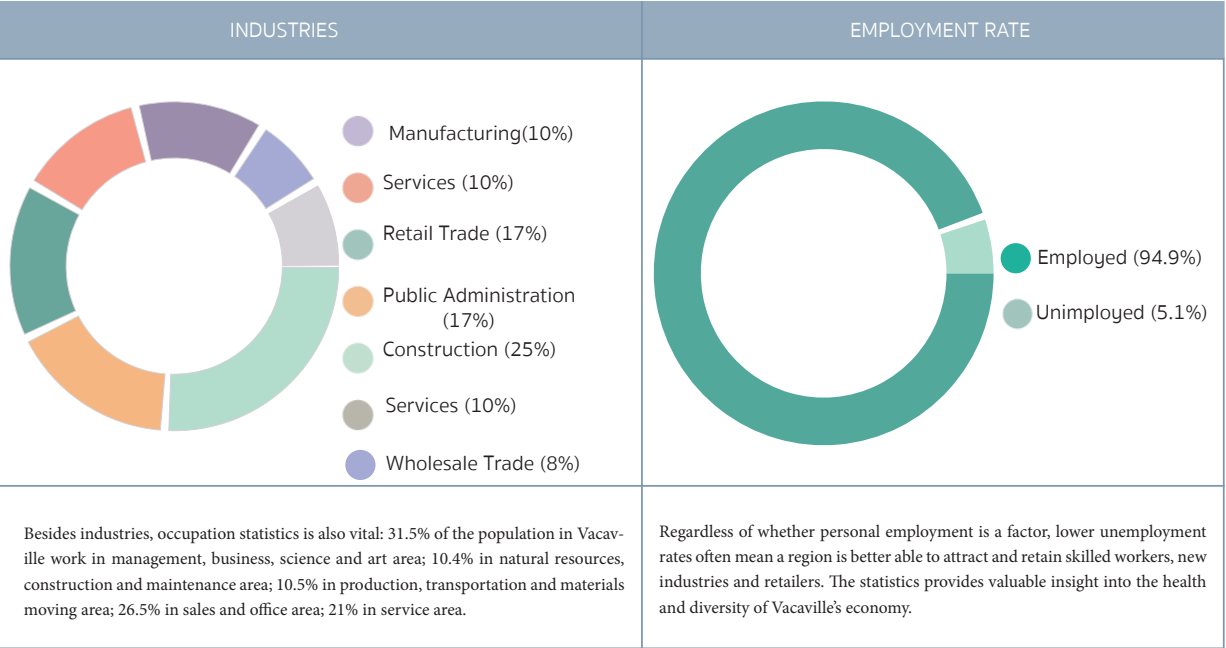
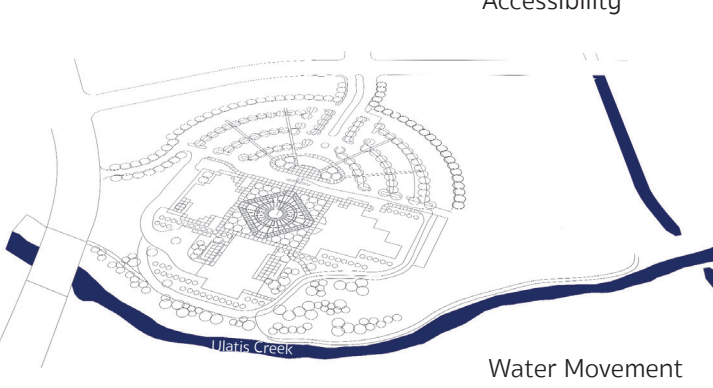
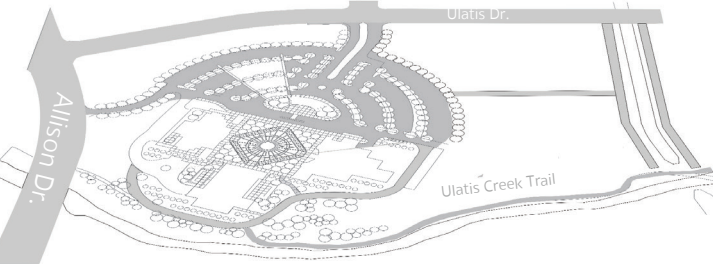
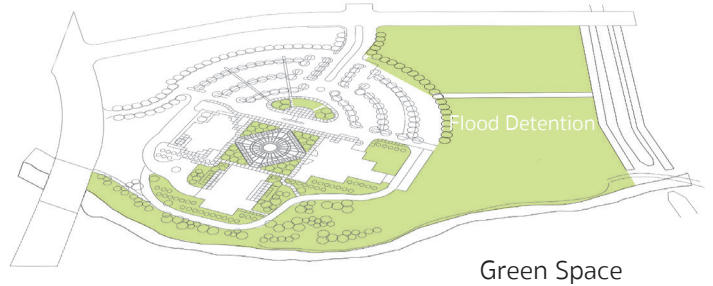
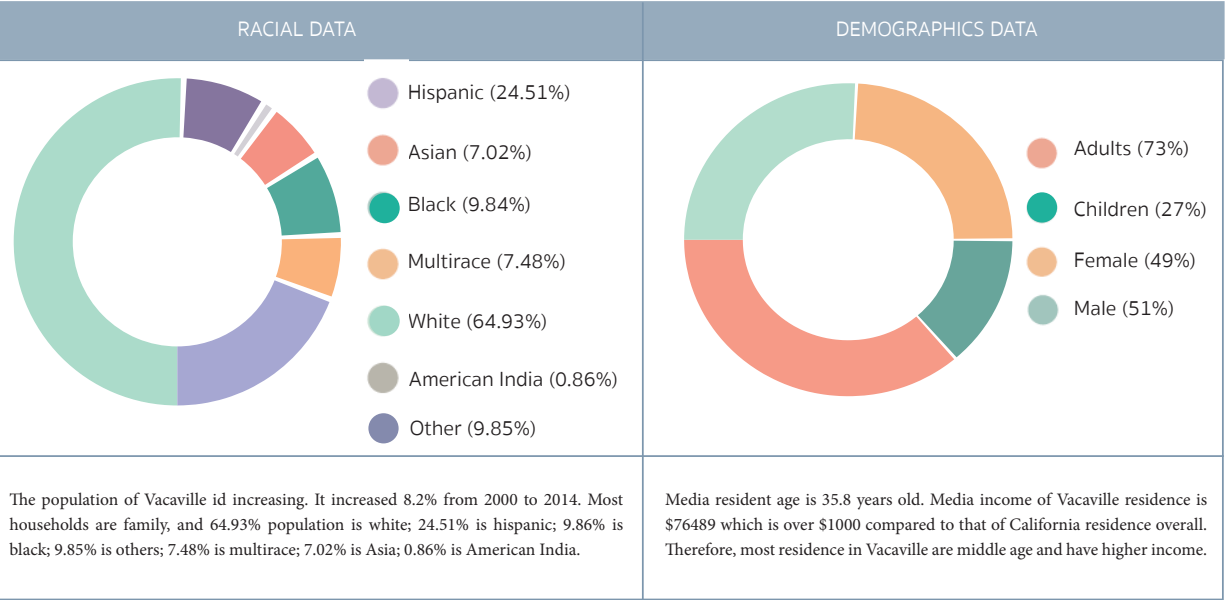


SITE CONTEXT

The site I chose is an open space near Vacaville Performing Arts Theatre, and is surrounded by Ulati Dr., Putah South and Ulati Creek. This site provides an ideal opportunity to incorporate public art into a landscape that also has existing water features. The existing uses also support an art focus in the landscape. Ulati creek is an unlined earth channel where some vegetation is allowed to grow for slope protection. Trees and woody vegetation are cleared annually to ensure adequate flood control capacity. Vegetation growth along the channels is also controlled by chemical herbicides. This water’s edge provides an opportunity to not only locate public art, but also a design that will stimulate public participation.



SITE ANALYSIS



02

CASE STUDY

GETTY MUSEUM GARDEN

Getty Museum is located in Los Angeles, California. The landscape was designed by Architect Richard Meier. The Central Garden at the Getty Center is an evolving work of art, with tree-lined walkways that lead visitors through extraordinary sights, sounds, and scents.

The Getty Center features several gardens and fountains, and landscaping for public enjoyment, including a cactus garden at the South Promontory, fountains in the Museum Courtyard and the Tram Arrival Plaza, shaded hideaways, and spectacular views of the Santa Monica Mountains, the Pacific Ocean, and

OLYMPIC SCULPTURE PARK

Olympic sculpture park is located in Seattle, Washington that opens on January 20th, 2007. It was designed by Weiss/Manfredi architects. This project contains 9-acre outdoor sculpture museum and beach. The client for this project is Seattle Art Museum.

Olympic sculpture park is a continuous undulating landscape of art and urban culture, bridging the infrastructural network of the city and connecting the waterfront edge. Olympic sculpture park is a typical landscape design that supports public art and sightseeing. Z-shaped hybrid landforms bring art, landscape and infrastructure together, and create a dynamic link descending 40 feet that makes the waterfront accessible. Unlike other sculpture gardens that are hidden behind a series of museum walls, the Olympic Sculpture Park is completely open, integrating the park into the landscape of the city.

GETTY MUSEUM GARDEN



© Robert Irwin | <https://www.pinterest.com/pin/464996730246604483/>



© Becky Cohen | <http://australianhumanitiesreview.org/2005/07/01/radical-cactus-the-other-garden-at-the-getty-center/>



© Humble-Novice | <http://humble-novice.deviantart.com/art/Getty-Center-Garden-217227498>



© Tim Rue | <http://australianhumanitiesreview.org/2005/07/01/radical-cactus-the-other-garden-at-the-getty-center/>



<https://traveltoeat.com/getty-center-brentwood-california/>



<http://www.getty.edu/visit/center/gardens.html>

VEGETATION

-More than 500 varieties of plant material are used in the landscaping of the Central Garden.

-The designer plays with different colors and textures of vegetation. Ex. Cactus garden & central garden.

WALKWAYS

-The walkway traverses a stream that winds through a variety of plants and gradually descends to a plaza where bougainvillea arbors provide scale and a sense of intimacy. -Wandering walkways lead visitors to experience different views of the garden.

FOUNTAIN

-The center of the garden is a pool of still water filled to its edges reflecting the surrounding volume and the sky above. -The design of Getty museum water feature a good use of water feature and geometric shapes. The central pool of still water is so aesthetic that echoes the sky and vegetation puzzle.

PUBLIC ART

-Bougainvillea Arbor serves as public arts that are placed in the garden, which creates a spectacular accent that covers and shades a walkway or garden entrance. Among plants that are adaptable to growing on an arbor, bougainvillea (*Bougainvillea* spp.) is one of the best. Tough, woody vines, they climb readily and cover themselves with brightly colored flowers during their blooming season. -Vegetations in the center garden create a shape of a puzzle.

PUBLIC PARTICIPATION

-Large open grass area is for people to lie down and experience the nature. A common activity on the Central Garden lawn is to roll down the hill.

VEGETATION

-As the route descends from the pavilion to the water, it connects three landscapes: a temperate evergreen forest, a deciduous forest, and a shoreline garden.

WALKWAYS

The design of pedestrian paths comes from paper-cut. Such continuous landscape that wanders from city to the shoreline, reestablishes the original topography of the site, for it crosses highway and train tracks. -Wandering along zigzag paths, pedestrians feel like being in a gigantic gallery, all the surrounding landscapes, from the sea and mountains to the city and port, and sculptures become showpieces.

ELEVATION CHANGE

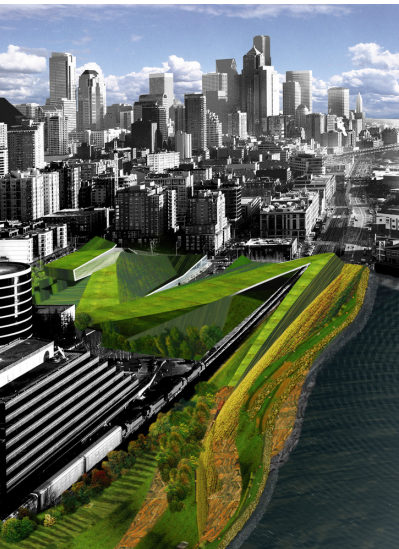
-Z-shaped hybrid landforms bring art, landscape and infrastructure together, and create a dynamic link descending 40 feet that makes the waterfront accessible. -Visitors walking along the path can hardly feel the elevation change because of the shape of the path.

PUBLIC ART

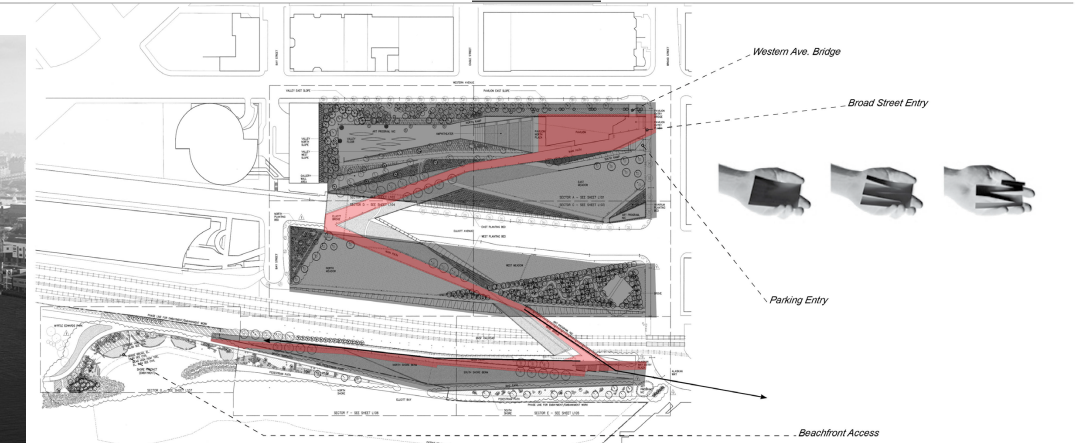
-Unlike other sculpture gardens that are hidden behind a series of museum walls, the Olympic Sculpture Park is completely open, integrating the park into the landscape of the city. -Transfer railroad and freeway from design barrier into a part of art design. -Cutting the landscape form is also an art design.

PUBLIC PARTICIPATION

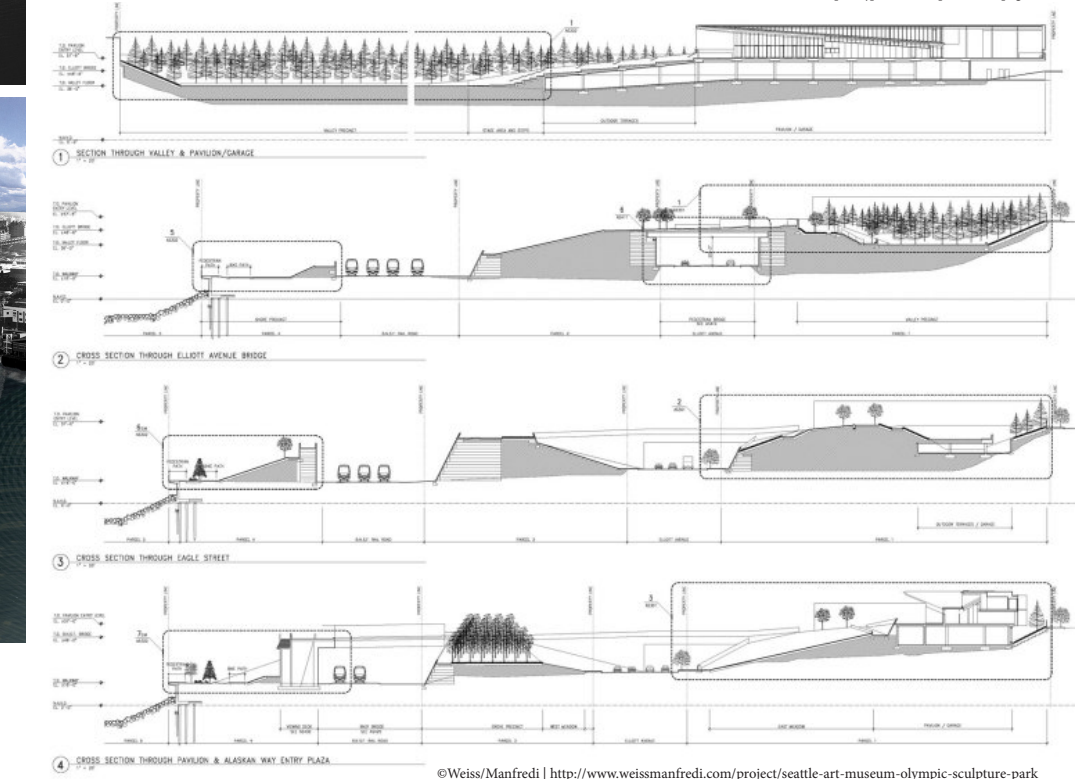
- Movable chairs for people to arrange into different pattern and for them to rest. -The movement sculpture invites people to walk through the piece and to touch the sculpture.



© Weiss/Manfredi | <http://www.weissmanfredi.com/project/seattle-art-museum-olympic-sculpture-park>



<https://cipeirce.wordpress.com/page/2/>



© Weiss/Manfredi | <http://www.weissmanfredi.com/project/seattle-art-museum-olympic-sculpture-park>

OLYMPIC SCULPTURE PARK

03

DESIGN INSPIRATIONS

DESIGN INSPIRATIONS



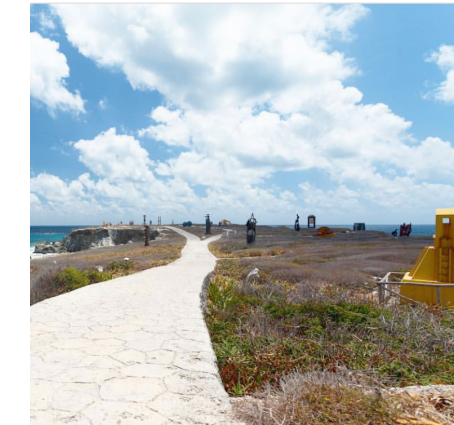
Artificial fog effect in Gloden Gate Park creates a mysterious, elegant visual effect, while a lower ambient temperature, humidity, air conditioning, air purification, dust flavored, eliminates static electricity, dust removal and lower environment PM 2.5. It is a good equipment of improving microclimate environment when manufacturing negative oxygen ions. It also stimulates people's public participation, since people tend to like to feel the water and mist.



Minghu wetland park, Liupanshui, Guizhou, China: Through a series of regenerative design techniques, particularly measures to slow down the flow of storm-water, a channelized concrete river and a deteriorated peri-urban site have been transformed into a nationally celebrated wetland park that functions as a major part of the city-wide ecological infrastructure planned to provide multiple ecosystem services, including storm-water management, water cleansing, and recovery of native habitats.



Fountain-jet water feature is activated by people touching a button or step on a stone. It lasts for couple minutes for people to enjoy the sound and appearance. Children can run through them, and play with water.



Public art garden, Isla Mujeres, Mexico: Picture an outdoor art exhibit in one of the most breathtaking, tropical settings. Garrafón Reef Park is home to the Punta Sur Sculpture Garden. The Sebastian Foundation, along with 23 artists from Mexico and around the world, created this exhibit for Isla Mujeres in 2001. Famous sculptors such as Jose Luis Cuevas used modern shapes and bright hues to interpret the legendary spirit of the Mayan civilization. A great spot for those who crave culture and creativity.

DESIGN KEYWORDS

Water Story

Wandering Paths

Topographic Change

Open Art Gallery

Public Participation

Open Gathering Space

Ecological Friendly

04

DESIGN DIAGRAM

PROJECT STATEMENT

WATER STORY project aims to develop an innovative and sustainable planning model for the Vacaville Performing Art Theatre district that embraces public art and disrupts the current binary relationship between land and water.

WATER STORY project embraces the different states of water features as the underlying planning framework for public art park. Through wandering paths, the viewer can have an opportunity to experience topographic change and to appreciate distinctive art pieces. The public art garden and Putah Creek pedestrian path serve as a recreational amenity for the district.

WATER STORY project creates a new public art park prototype-transforming an open grassland into a multi-functional planning network.

DESIGN MASTER PLAN

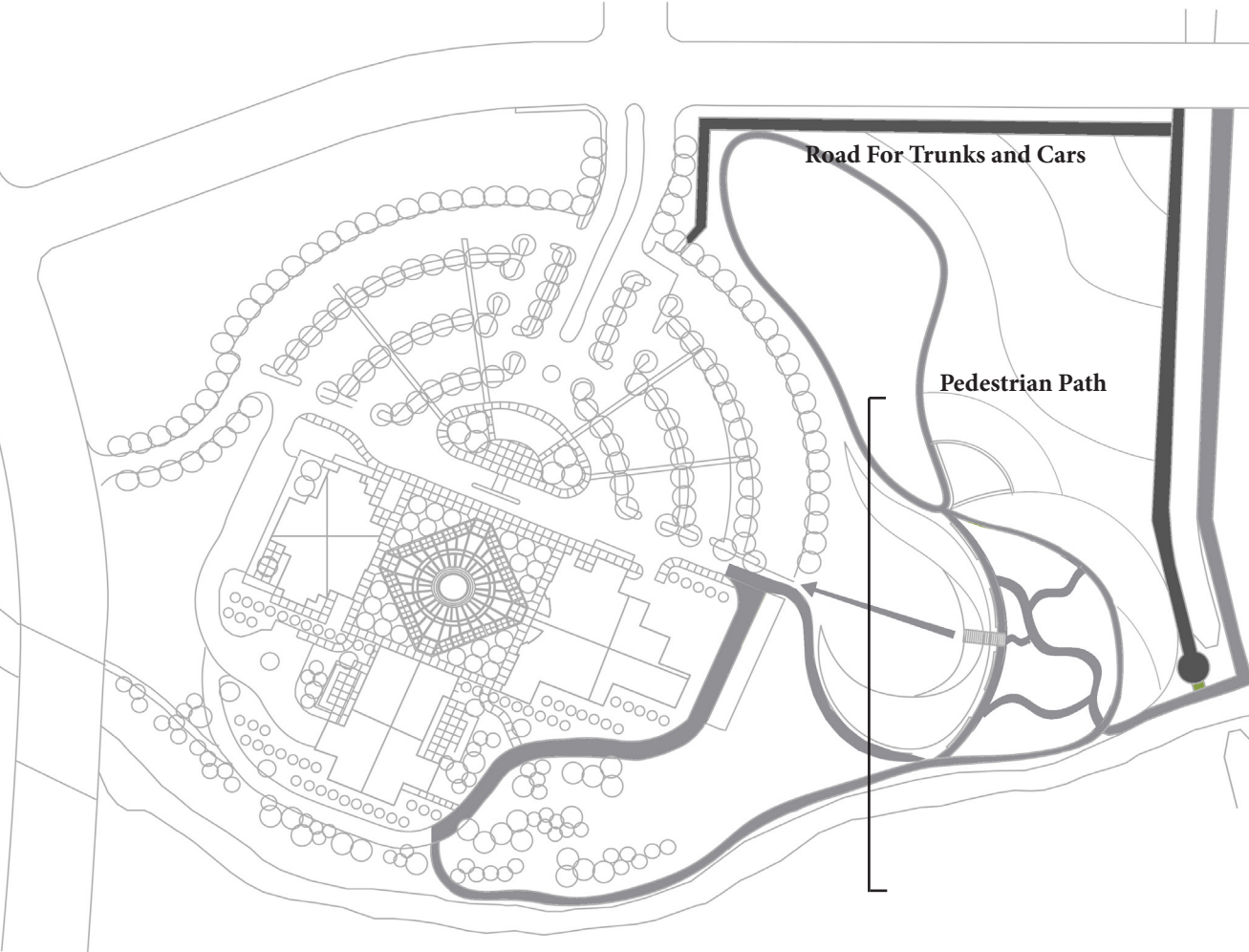


DESIGN MASTER PLAN

Water Story project is a public art garden, which is an open gallery not only for art pieces, but also for surrounding landscape such as Putah Creek. The entrance of the park area has a distinct direction signs and a map showing the view where to explore and how they can engage with this park. Artificial Hills creates topographic change, and on a sunny day it provides a perfect spot for people to lie on the hill, which is covered by grass. After walking through the artificial hills, community gardens and fountain jet water feature captures the attention of the visitors. People can activate it by pushing a button or stepping on a stone, enjoying and feeling water. Sitting on the benches, people can experience fog effect. All those different states of water brings people into outdoors and engage with the surrounding. Public art garden and creek pedestrian walk are mainly used for public art display: through wandering paths, people listen to this water story told by this landscape design.

- LEGEND
- 1. Entrance with Signage
 - 2. Artificial Hills
 - 3. Fountain Jet Water Features
 - 4. Art Garden
 - 5. Water Pond
 - 6. Public Open Space
 - 7. Creek Pedestrian Path
 - 8. Planting Patterns

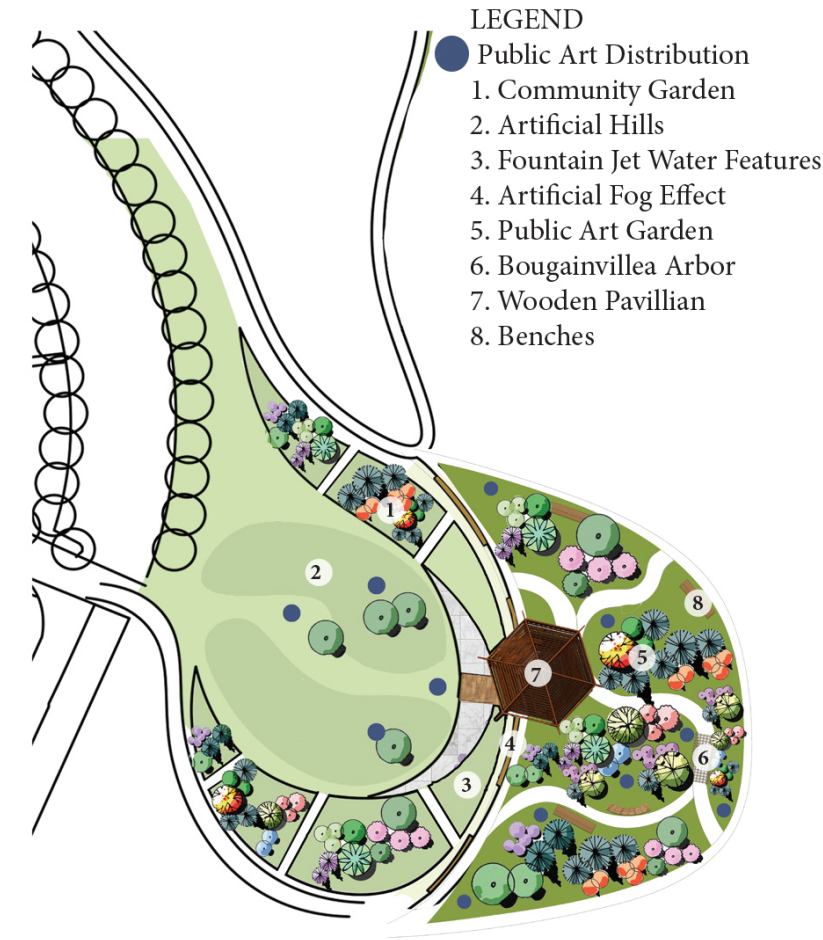
CIRCULATION PLAN



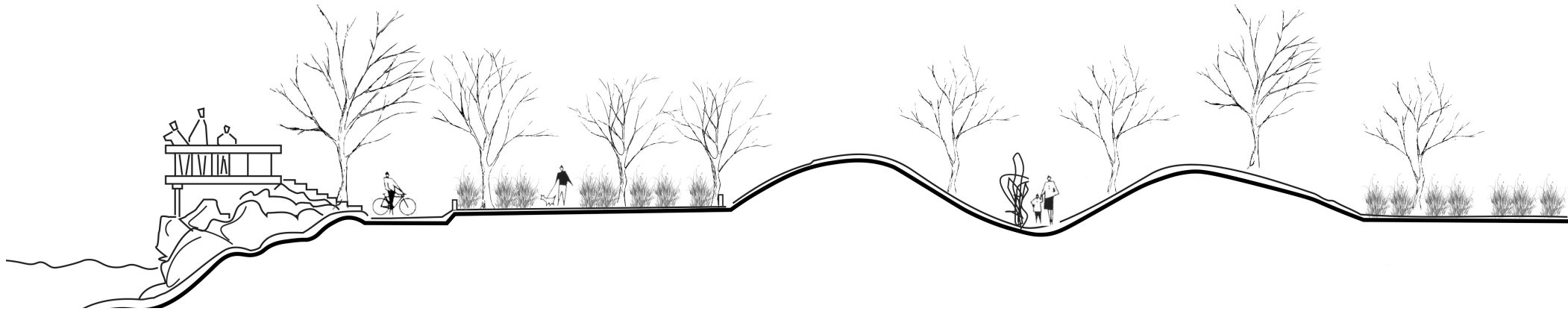
CIRCULATION

Formal wandering pedestrian paths lead to the public art garden and Putah Creek pedestrian walk. Wandering paths force visitors stay in the park for longer time, and spend more time outside and with their friends. Informal circulation is the one through artificial hills. There is not a specific path, which gives people more freedom to relax and explore the site. Roads for vehicles are separated from the pedestrian paths for safety issues.

DETAILED PLAN



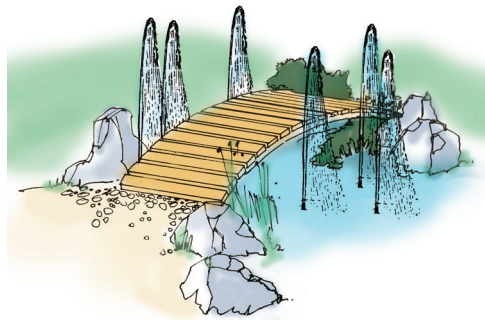
SECTION DRAWING



<http://img.timeoutshanghai.com>



<http://static.panoramio.com/photos/large/62382086.jpg>



Fountain jet water features



<http://www.trbimg.com/img-527d86cc/turbine/os-see-art-orlando-sculpture-0-jpg-20131108/600/600x393>



<http://artscomplex.com/Portals/0/Downtown%20>



Artificial Fog Effect

PLANTS AT ART GARDEN

<i>Brugmansia suaveolens</i> 'Charles Grimaldi'	golden angels' trumpet
<i>Cuphea hyssopifolia</i>	false heather
<i>Dalechampia dioscoreifolia</i>	purple wings
<i>Gaura lindheimeri</i>	gaura
<i>Heliotropum arborescens</i> 'Black Beauty'	heliotrope
<i>Kalanchoe pumila</i>	kalanchoe
<i>Lagerstroemia indica</i> 'Muskogee'	crape myrtle
<i>Lavandula x heterophylla</i> 'Goodwin Creek'	lavender
<i>Libertia peregrinans</i>	gold-leaf New Zealand iris
<i>Myrsine africana</i>	African boxwood

VEGETATION

Different variation of vegetation creates layering of colors and heights. Each type of plant will have an educational signage telling students and visitors its scientific name, Species, Genius and the common name.

PLANTING PATTERNS



Tanacetum parthenium
'Aureum'

golden feverfew

Tibouchina heteromalla

princess flower

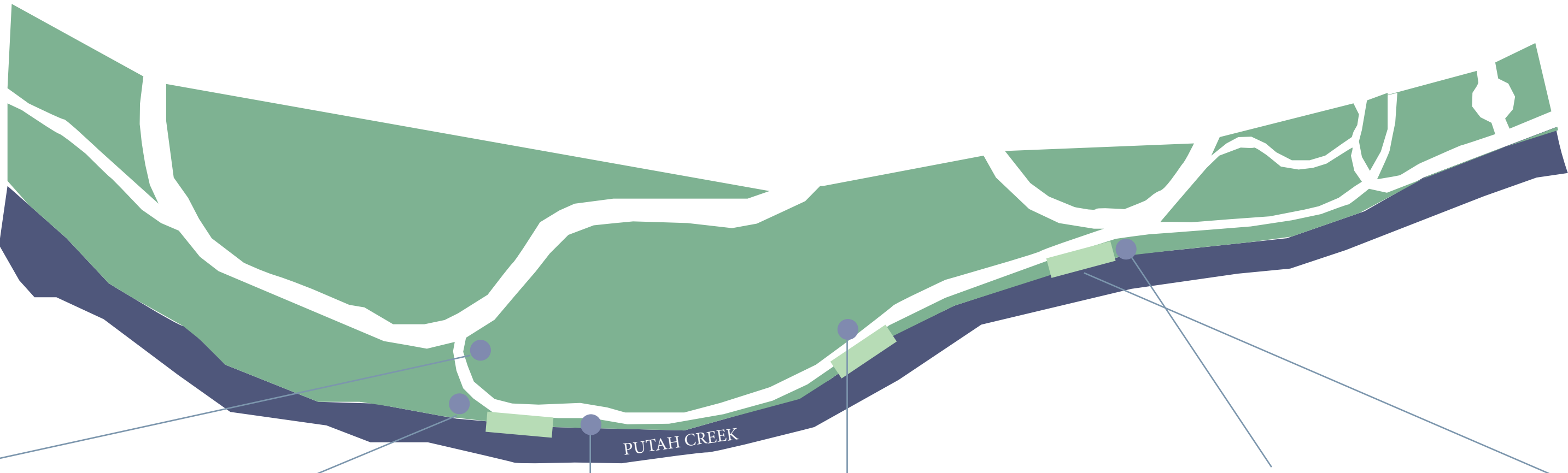
Tulbaghia violacea
'Silver Lace'

variegated society garlic

CREEK PEDESTRIAN PATH

Before Putah Creek was isolated from people by vegetation and grass. When people pass Putah Creek, they have a hard time noticing the existence of the Creek if it is not for the water flow sound. Creek pedestrian path is a sightseeing walkway with lookouts and sculptures, which closes the distance between people and the Creek. People can have the opportunities to overlook torrential mountain creek and to enjoy the sound of water flow.

CREEK PEDESTRIAN PATH



05

FUTURE VISIONS

FUTURE VISIONS

Water Story Project aims to create a public art garden to support Vacaville Arts Theater and surrounding communities. It invites people into the site and engages with art pieces, which stimulates public participation and engagement. A future vision for this project is a vibrant and alive environment with a relaxed atmosphere. A place where people love to spend time on weekends and where they love to hang out with friends.

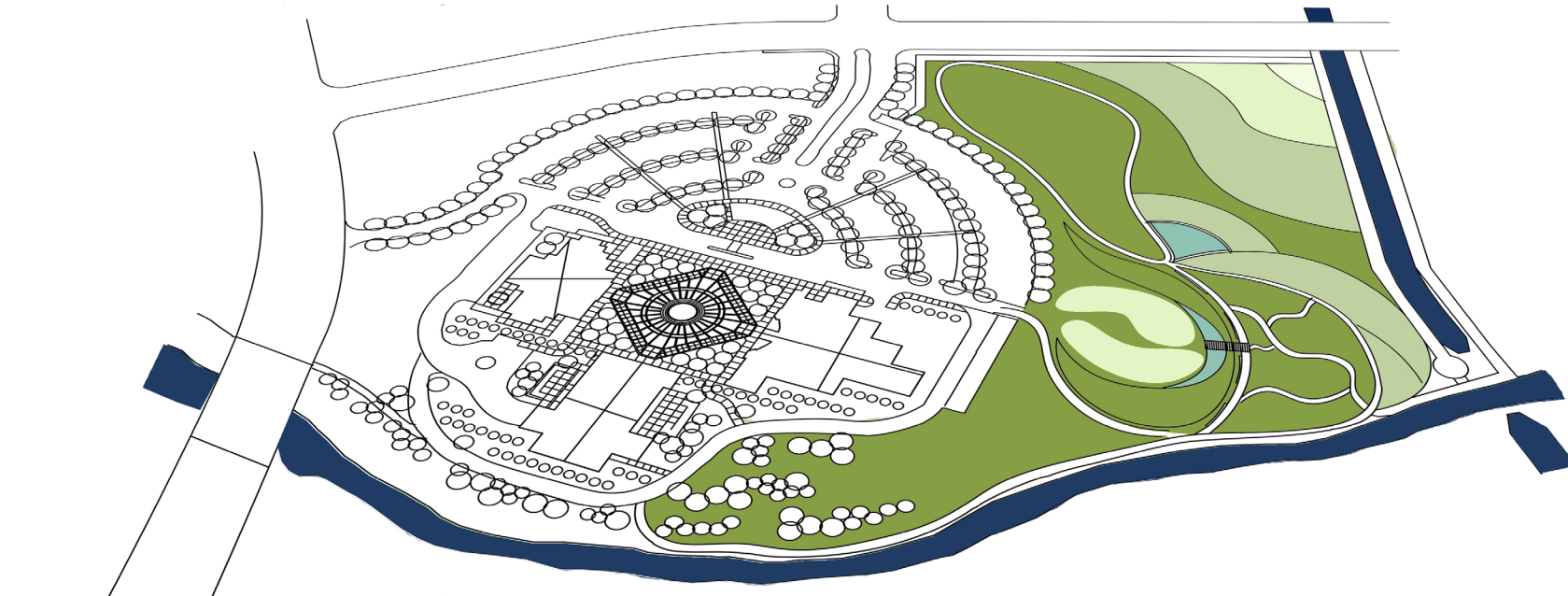
ENGAGEMENT



EDUCATION



ART



Copy right of top three photos:
<https://pbs.twimg.com/media/AwST94tCMAEZgS3.jpg>
[http://jacksonrecandparks.com/media/leagues/3046/graphics/Image/Raptor_Center_2\(1\).JPG](http://jacksonrecandparks.com/media/leagues/3046/graphics/Image/Raptor_Center_2(1).JPG)
<https://s-media-cache-ak0.pinimg.com/236x/02/>